

BSAVA Postgraduate Certificate Programmes





Introduction

Welcome to the BSAVA Postgraduate Certificate (PGCert) programmes.

BSAVA are proud to offer high quality, structured, and supportive programmes of study for veterinary surgeons working in first opinion practice who want to pursue further qualifications. We offer PGCert qualifications in:

- Small Animal Medicine
- Small Animal Surgery
- Small Animal Ophthalmology
- Small Animal Emergency & Critical Care
- Small Animal Diagnostic Imaging (New for 2022)

The aim of each programme is to develop confident, competent, and enthusiastic veterinary surgeons who are able to provide a consistently high standard of care.

We understand how challenging it can be to fit postgraduate study into a busy life, so we have worked hard to develop programmes of study that permit flexibility. The programmes are designed to be completed across 3 years, but we have options to extend to 4 or 5 years to facilitate less intensive study, and you can even take a year out by suspending your studies. By studying over several years, you will benefit from having time to apply your acquired skills and knowledge in practice throughout the programme, with plenty of opportunity for reflection and consolidation. This allows you to turn what you have learned into long-term changes in your clinical approach.

Each of our programmes involves a combination of attendance at day courses and accompanying online study materials. The day courses offer a great opportunity to ask questions and engage in discussion with the teachers, but also to meet and make new connections with fellow students. Our feedback has emphasised how important these face-to-face days are, and many of our previous students have commented on how much they enjoy meeting up with their group each month.

Each day course is followed by a period of online study which is supported and guided by a member of staff who is dedicated to each individual PGCert programme. The advantage of online

study is that it can be done at a time and place convenient to you – listening to podcasts in the car or when walking the dog, dipping into a discussion forum during a quick coffee break or working through a quiz or case problem in the evening. We know that studying for a postgraduate certificate may be tough and that it is possible to feel isolated, especially when studying online, so we have support in place if you need it; from teachers and fellow students, from the BSAVA staff, and from a network of dedicated mentors willing to offer advice and encouragement. Spaces on our programmes are limited to ensure that our team can provide personal feedback and support, and to ensure that our specialist speakers are able to answer individual questions, both on the day of our courses and within our online forums.

All students in their first three years of study now benefit from membership of RCVS Knowledge with access to the RCVS Knowledge library. You will also have access to support from RCVS Knowledge staff, who can assist you in developing the skills required to efficiently find, appraise, and apply relevant evidence. This membership is an affordable option to continue after you complete your PGCert, allowing you to maintain your access to up-to-date evidence via a familiar platform.

The BSAVA PGCert qualifications are well-regarded within the veterinary profession and are validated through Nottingham Trent University. Each programme carries 60 academic credits at Masters level, and they are approved as a certificate-level qualification for the purposes of the RCVS Advanced Practitioner list. The medicine and surgery programmes have also been approved by VetCEE (Veterinary Continuous Education in Europe).

Laura Haddock BVSc PGCE MRCVS
BSAVA Academic Manager



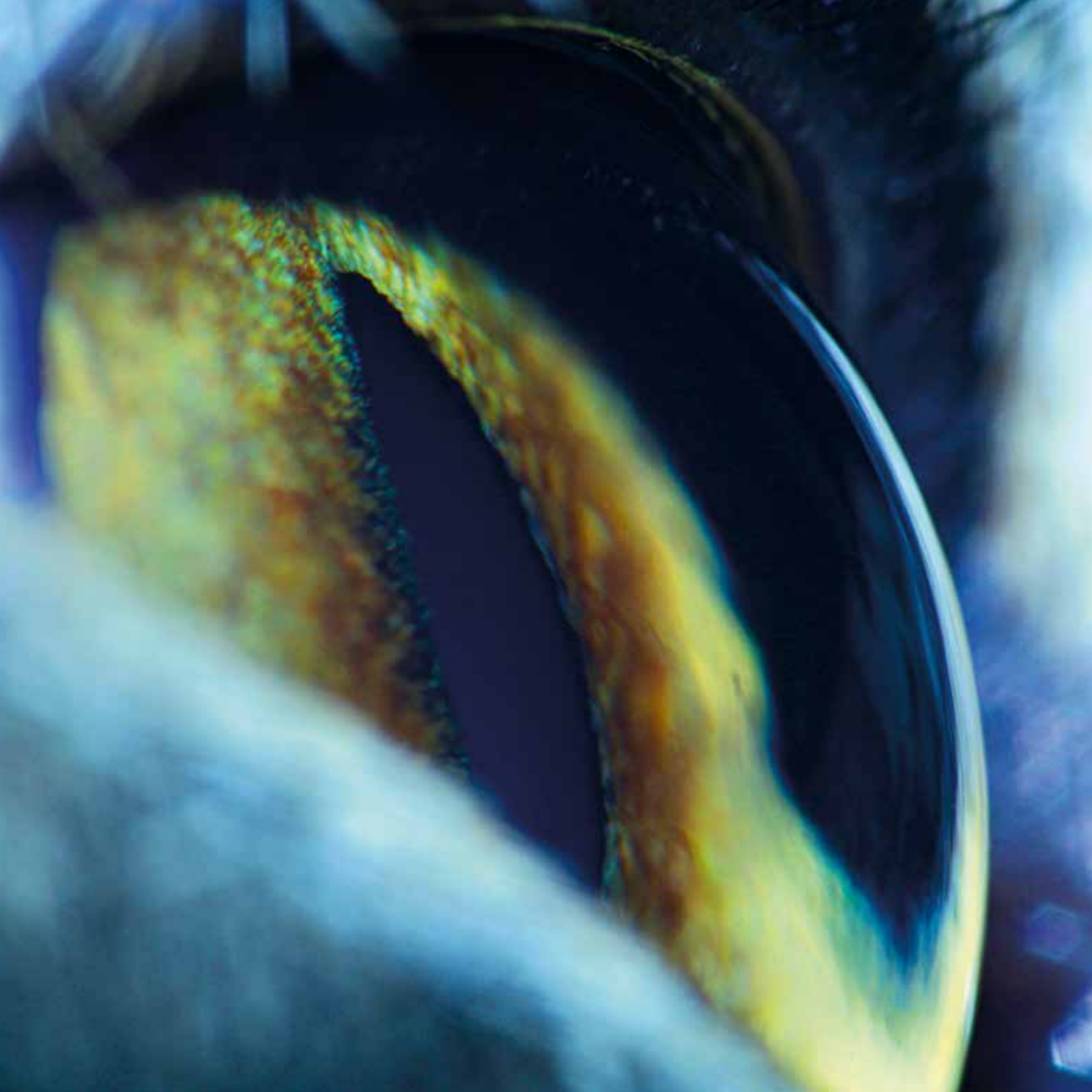


BSAVA Postgraduate Certificates to choose from

- Small Animal Medicine
- Small Animal Surgery
- Small Animal Emergency & Critical Care
- Small Animal Ophthalmology
- Small Animal Diagnostic Imaging (New in 2022)

What do the BSAVA Postgraduate Certificates offer?

- An opportunity to develop discipline-based knowledge and skills which will be invaluable in practice
- Flexible yet structured study through a combination of taught courses and online activities
- Academic and pastoral support throughout your studies
- Learning from outstanding teachers, delivering practical and clinically relevant material
- Increased confidence and enthusiasm when handling cases
- A group of like-minded individuals to discuss cases with, and build friendships along the way
- A university-validated qualification recognised and respected by peers and employers alike



How are the BSAVA Postgraduate Certificates structured?

The BSAVA Postgraduate Certificates are divided into two modules:

Module I

Medicine Surgery ECC and Ophthalmology

20 taught day courses

Each of the 20 small units begins with a one day course of teaching and discussion, combining lectures and interactive case discussions. For the Small Animal Surgery, Small Animal Ophthalmology and Small Animal Emergency & Critical Care certificates, some of these modules will be practical in nature.

Diagnostic Imaging

15 core units plus an elective

Eight of the core subject units will include an attendance day comprising of practical skills training, lectures and interactive case based discussion. The remaining seven core subject units will be delivered entirely online through a combination of webinars and live streamed imaging rounds. The elective will contain online teaching and 2 attendance days.

Online resources and activities

You will have access to the BSAVA education website, which hosts a variety of activities and resources. There will be an online assessment task for each unit, for which you will get feedback.

Typical resources include:

- Recommended reading lists
- Notes and lecture presentations from the taught course
- Access to podcasts (BSAVA Congress MP3s), and publications like JSAP and Companion
- Multiple choice questions or short question exercises
- Case-based problem solving exercises
- Image interpretation exercises
- Webinars
- Online moderated discussion forums

Assessment of Module I

Satisfactory completion of each unit will require attendance at the taught course (where applicable) and participation in all compulsory online activities. When all units have been completed, there will be a formal written examination which candidates must pass before progressing to the next section of the programme.

Module II

Casebook

Eight cases will be presented, illustrating a variety of clinical presentations, and demonstrating the candidate's ability to work logically through a case, to select and justify the decisions made, and to evaluate the outcome in the context of the published literature. A short reflective commentary will be required for two of these cases. Module II comprises submission of 8 short case reports and two extended commentaries.

Case Diary

Candidates on the diagnostic imaging certificate will need to submit a portfolio of prescribed images in addition to the case book.



The BSAVA Postgraduate Certificates are validated by Nottingham Trent University. As a validated centre, BSAVA is approved to offer one or more specified awards. The University retains responsibility for the approval of modifications to existing courses, introduction of new courses and provides substantial input into the quality assurance processes underpinning the courses of study offered.

Students studying and successfully passing a BSAVA Postgraduate Certificate will be awarded a Nottingham Trent University certificate.

What support will I get along the way?

When you enrol on the BSAVA Postgraduate Certificate (PGCert) programme you will be allocated a mentor whose role is to provide you with general advice and encouragement, should you need it. Throughout each element of the courses (taught courses and online activities) there are frequent opportunities for you to ask questions. There are also a designated Education Coordinator (for general enquiries) and an Online Education Coordinator (for academic enquiries) for each PGCert, along with a Casebook Coordinator (to provide you with advice about the preparation of your casebook).

Hours of study

Module I will require approximately 400 hours of study. This is comprised of approximately 20 hours per unit:

- one day taught course (7 hours)
- review of the course notes and participation in the online resources and activities (approximately 13 hours).

Module II involves around 200 further hours, for preparation of the casebook.

These are a guide only and will vary with individuals, and their knowledge and skill base upon entering the programme.

Most students will complete their studies over 3 years:

- Year 1: ten subject units and online activities
- Year 2: ten subject units and online activities
- Year 3: written exam and casebook submission.

However, it is possible to complete the programme less intensively over a period of four or five years if you prefer.



Enrolment criteria

The criteria for enrolment onto the BSAVA Postgraduate Certificate courses are as follows:

- Applicants must hold a veterinary qualification
- UK based applicants must be on the RCVS Home Practising Register
- Applicants based outside the UK must hold a veterinary qualification which would entitle them to register as a member of the RCVS
- Applicants must have spent a minimum of one year in veterinary practice
- Veterinary surgeons who qualified in 2007 or later and who are based in the UK must have completed the RCVS Professional Development Phase (PDP) before they can enrol

As the course is both taught and assessed in English, applicants must have a good command of both spoken and written English. We do not enforce testing, but suggest a minimum requirement of British Council IELTS grade 6.5 or equivalent. Equivalent experience may include the successful completion of a degree or other accredited postgraduate qualification in the English language or a significant period of residence/work placement in an English-speaking country.

How to enrol

You can now enrol on a BSAVA Postgraduate Certificate at any time throughout the year from the BSAVA website www.bsava.com/postgradcert. Places are offered on a first come first served basis. There is one intake of students per year on each of the programmes.

We will notify you within three working days of receipt as to whether or not you have successfully secured a place. We will then send you a full enrolment pack, which must be completed, signed and returned with a non-refundable deposit of £300.00 by the stated deadline in order to confirm your place.

If numbers are such that we cannot enrol you immediately we will place you on a waiting list and will contact you as soon as a place is available for you.

Fees

Students are required to pay an annual enrolment fee for each of the first 3 years of their studies. In 2022 this fee is set at £3730 plus VAT*. This fee covers:

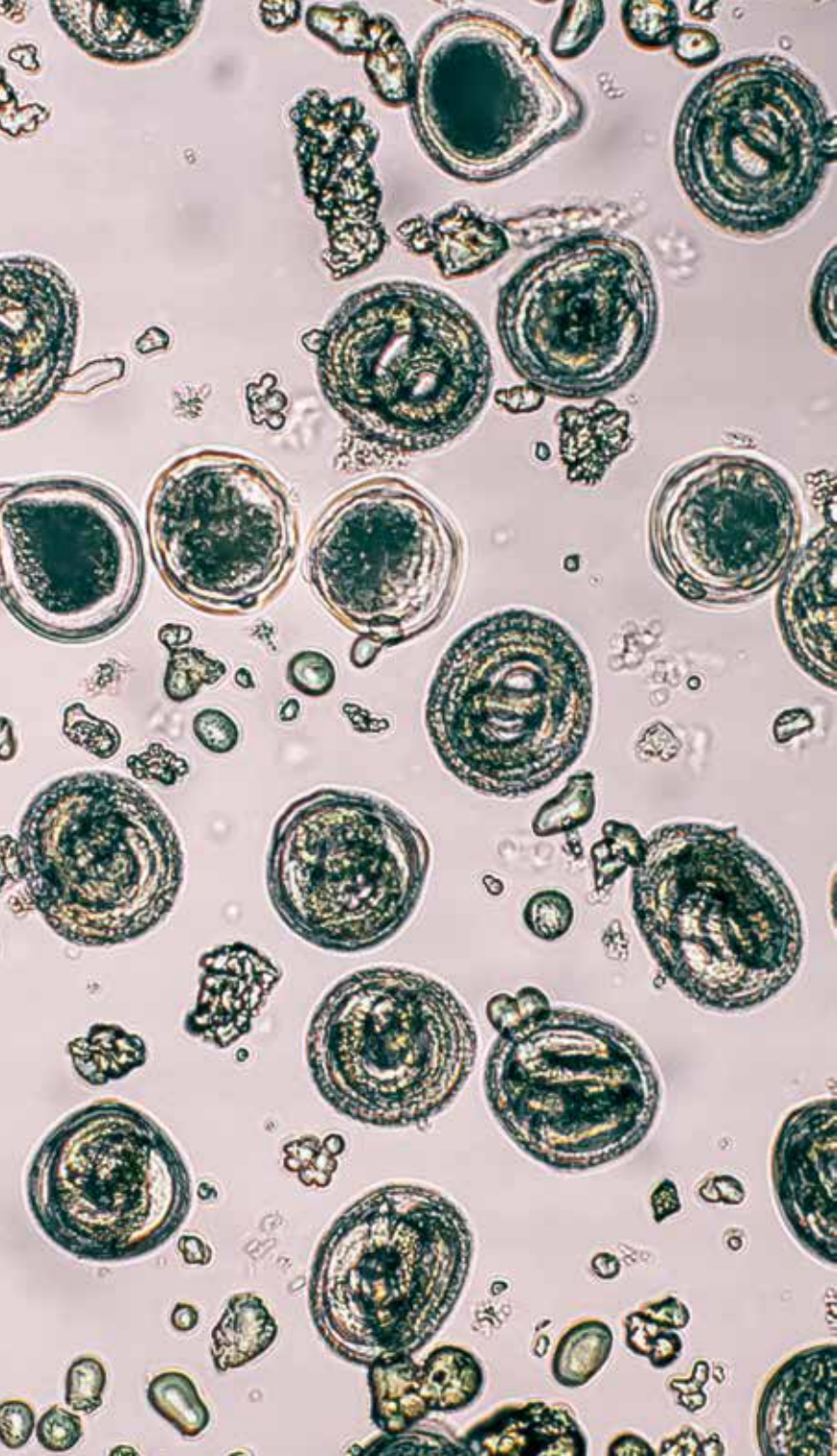
- Attendance at each of the taught courses run for the programme of study during the year
- Access to all online activities and resources
- Membership and support from RCVS Knowledge, including access to the RCVS Knowledge Library
- All examination fees
- Academic and pastoral support
- Registration with Nottingham Trent University
- BSAVA membership
- Discounted admission to BSAVA Congress
- Discount on BSAVA manuals

Please note: If studies are extended, then the full enrolment fee is not payable in years 4 and 5. Students will be required to maintain their BSAVA membership, and to pay a fee each year for registration with Nottingham Trent University (currently set at £100 plus VAT).

Payment methods

Credit card, BACS, cheque, monthly direct debit.

*The annual enrolment fee is set each year, and may therefore undergo a modest inflationary increase each year.



RCVS Advanced practitioner list

The BSAVA PGCerts are approved as appropriate postgraduate qualifications for the purposes of the RCVS Advanced Practitioner List. There is no requirement to undertake additional accredited training in Professional Key Skills for holders of BSAVA PGCerts gained in 2017 or later. For full details of the requirements and procedure for application to the RCVS Advanced Practitioner List please visit www.rcvs.org/education/advanced-practitioner-status/

Other accredited qualifications offered by BSAVA

Masters

The Masters in Clinical Veterinary Research is intended to give vets, particularly those working in practice, the chance to undertake some clinical research.

The qualification, validated by Nottingham Trent University, is aimed at people who already have any accredited postgraduate certificate (60 credits at Level 7) relevant to some aspect of veterinary medicine or surgery. It is based on a further 1,200 study hours and could be flexibly achieved in two years of part-time study or up to five years, depending on the project type and an individual's availability. The Masters programme starts with online study into the principles of clinical research, which students will then apply to their own research project.

For further information please email masters@bsava.com

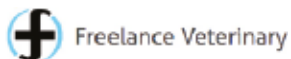


Our sponsors

BSAVA would like to say a huge thank you to our sponsors for supporting us in delivering our practical courses. And we look forward to continuing to work with you in the future.

- Freelance
- Kruuse
- Safe4

- SJ Hales Veterinary Speciality Products
- Veterinary Instrumentation
- Vygon



FAQs

Where are the taught courses held?

The Small Animal Medicine and Small Animal Surgery courses are held at BSAVA HQ in Gloucester as well as the Radisson Blu Hotel, Manchester Airport, with the Small Animal Surgery practical courses being held at University of Bristol.

The Small Animal Emergency & Critical Care courses are held at BSAVA HQ in Gloucester and Vets Now HQ in Dunfermline.

The Small Animal Ophthalmology courses are held at BSAVA HQ in Gloucester and The Cambridge Belfry Hotel in Cambridgeshire.

The Small Animal Diagnostic Imaging attendance courses are held at BSAVA HQ and at the Probo Medical facility, both of which are in Gloucester.

Please note: BSAVA reserves the right to use alternative venues for day courses from time to time.

Can I spread the cost of the enrolment fee?

Yes, you can spread the fee by paying by monthly direct debit.

Does the enrolment fee cover examination costs?

Yes, examination costs are included, so there are no additional fees to pay.

When do the Postgraduate Certificates start?

The Small Animal Medicine, Surgery, and Diagnostic Imaging Certificates start in January and the Small Animal Ophthalmology and ECC Certificates start in May.

Contact info



certificate@bsava.com



www.bsava.com/postgradcert



01452 726700



BSAVA

British Small Animal Veterinary Association

Woodrow House
1 Telford Way
Waterwells Business Park
Quedgeley
Gloucester
GL2 2AB

Tel: 01452 726700

Fax: 01452 726701

Email: administration@bsava.com

Web: www.bsava.com



17341CE22