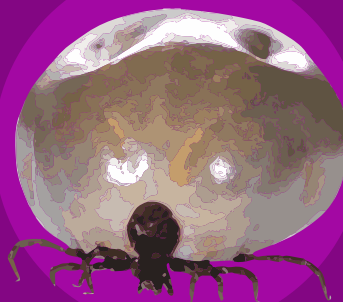


#TickBitePreventionWeek

22–28 March 2020

TICKS ARE PARASITES

...that feed on the blood of the animal they attach to. When full, they're about the size of a pea! There are a number of different species of tick, but not all are found in the UK.



TICKS ARE COMMONLY FOUND IN AREAS SUCH AS PASTURE AND WOODLAND

...though they can also be found in parks and urban areas.

CHECK YOUR PETS REGULARLY FOR TICKS.

For dogs, it is recommended that you check them after their walk.

IF USING A TICK REMOVING TOOL

...make sure that you twist and never pull – this will help to prevent leaving the head of the tick in your pet, and never squeeze the tick's body.

TICKS ARE PARTICULARLY ACTIVE DURING THE SPRING AND AUTUMN

...although they can be active all year round. You should ensure that you check your pets for ticks every day.

TICKS SPREAD DISEASE IN THEIR SALIVA

...when they feed on an animal's blood. In the UK, ticks are known to spread Lyme disease. Both dogs and humans are known to be affected, but it is rarely diagnosed in cats.

IF TRAVELLING ABROAD

...with your pet, you should check them for ticks thoroughly just before returning to the UK, and again on the point of return.

THE QUICKER YOU ARE ABLE TO REMOVE A TICK

...the less chance it will have to pass disease on to your pet.

REMOVE TICKS QUICKLY AND SAFELY.

When removing ticks, take care to ensure that the whole of the tick is removed from your pet. The best way to remove ticks is to use a 'tick remover' tool.

HUMANS CAN GET BITTEN BY TICKS

...so it is important to check yourself over when you get back from the dog walk.

TAKING YOUR PET ON HOLIDAY?

Speak to your local vet for advice and consider whether it is in the best interests of your pet to travel. You might want to consider alternative arrangements for your pet whilst you are away.

British Small Animal Veterinary Association

Woodrow House, 1 Telford Way, Waterwells Business Park, Quedgeley, Gloucestershire GL2 2AB
Tel: 01452 726700 Fax: 01452 726701 Email: administration@bsava.com

www.bsava.com



BSAVA
BRITISH SMALL ANIMAL VETERINARY ASSOCIATION